

USB Driver Installation and JRiver/Foobar Setup

CMA Twelve DAC with Headphone Amplifier

SHB2 Super Hub

CMA 400i DAC with Headphone Amplifier

CMA 600i DAC with Headphone Amplifier

www.questyle.com

Contents

PC System Requirements	02
Install CMA Twelve/SHB2/CMA400i/CMA600i Driver on Windows OS	03
Core Audio Stream Introduction	06
Setup Core Audio Stream on JRiver Media Center	06
True DSD Technology	10
Setup DSD on JRiver Media Center	10
Install Foobar2000	14
Setup on Mac OS	26
Cautions	27

Congratulations to you for being the owner of Questyle Audio products.

USB Driver Installation and JRiver/Foobar Setup are the same on Questyle Audio's desktop devices (including CMA Twelve, SHB2, CMA400i and CMA600i). Please follow the instructions below to find out how to install USB Driver or set up JRiver/Foobar.

Install CMA Twelve/SHB2/CMA400i/CMA600i Driver on Windows OS

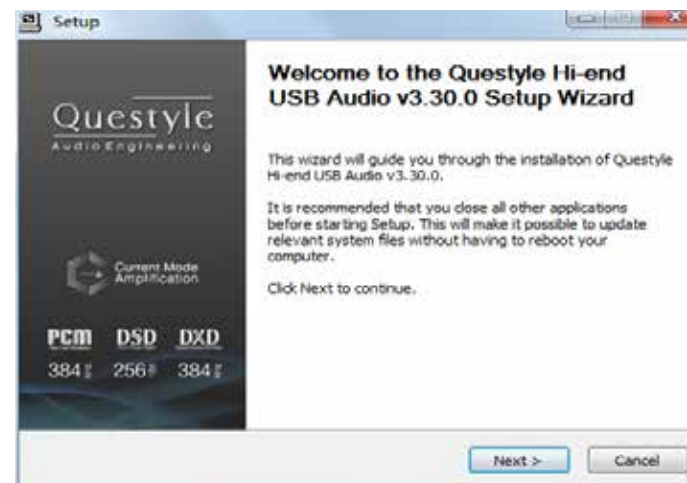
CMA Twelve, SHB2, CMA400i and CMA600i can be recognized by PC after installing the device driver on Windows OS. We take Win7 64bit OS for an example to show the Driver installation.

- 1) Connect your device to its power supply and switch it on;
- 2) Connect your device to PC with a USB cable;
- 3) Put the provided device driver disc into your PC and open the folder labeled "Driver

/ For Windows 7, 8, 8.1 and 10 /", and then double click "Setup.exe".



- 4) Then follow the steps below:



PC System Requirements

1) Operation System

CMA Twelve, SHB2, CMA400i and CMA600i driver and hardware support Win XP / Vista / Win7 / Win8 / Win8.1/ Win10. For Apple Mac OS, later versions than the 10.5.7 are well matched without installing any driver.

2) Media Player

CMA Twelve, SHB2, CMA400i and CMA600i are not limited to any special media player. Any PC compatible player (including video players) is well matched.

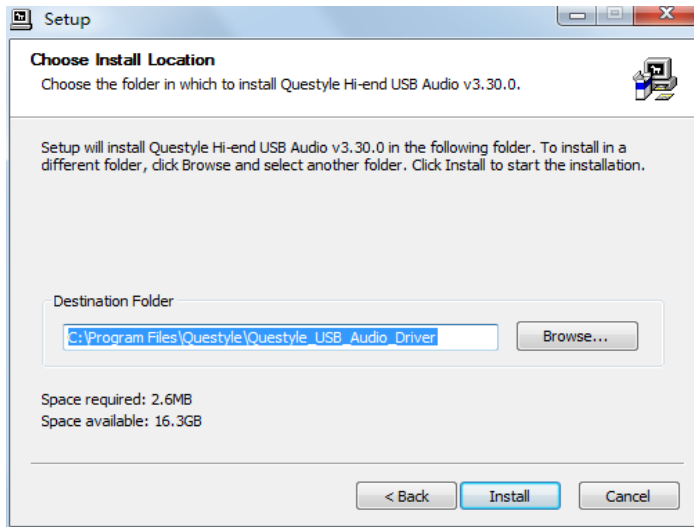
3) File Format

File format is up to the media player on your PC. CMA Twelve, SHB2, CMA400i and CMA600i can decode any file format that the media player supports.

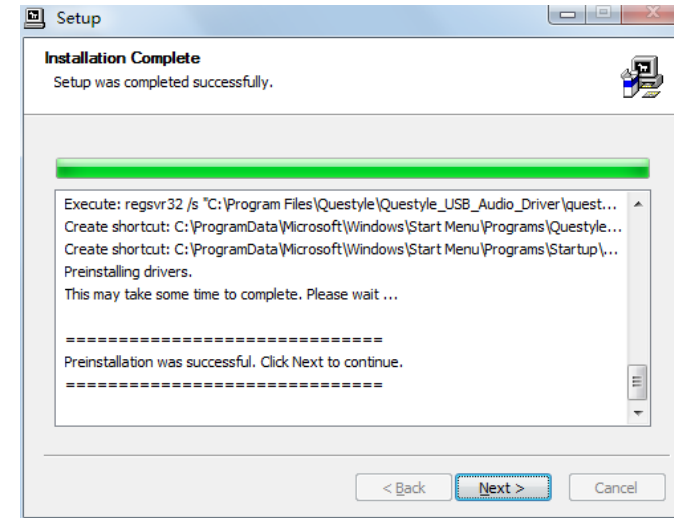
4) Requirements for PC Configuration

At least one USB port is required. An acceptable USB2.0 high-speed cable of type A-to-B plug. We suggest using the high-quality USB cable to ensure the stability and reliability of data transmission and guarantee the best performance of CMA Twelve, SHB2, CMA400i and CMA600i.

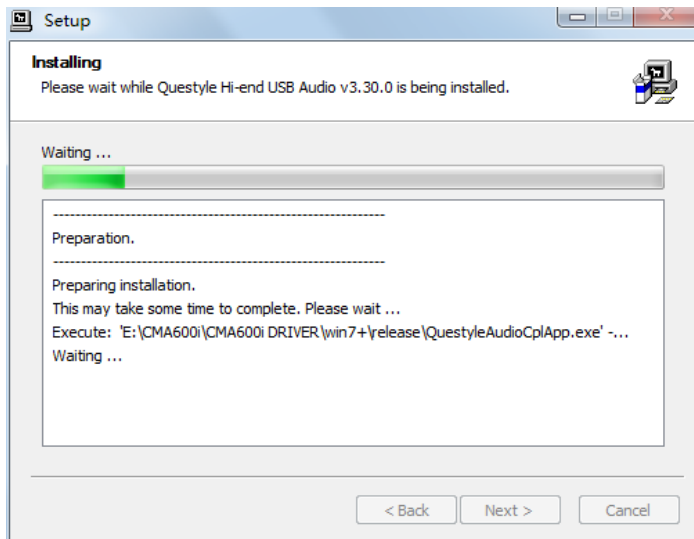
Click "Install" (Default install location is C drive)



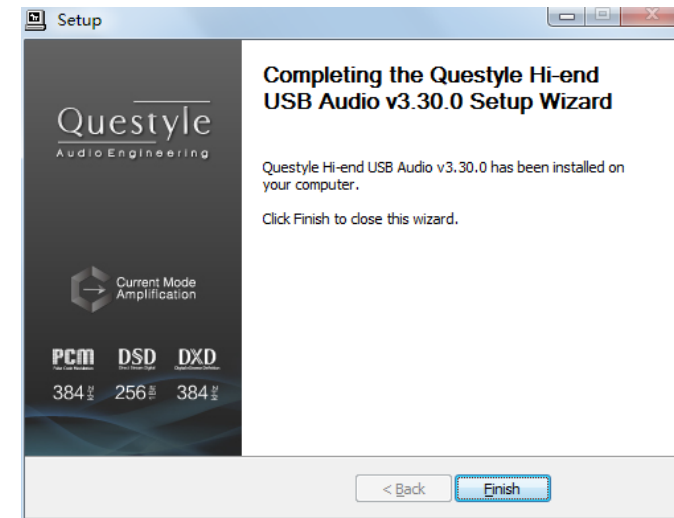
Installation is completed, click "Next"



Installation will take 3 or 5 minutes



Click "Finish" to exit the installation



- 5) Restart your PC and the device driver is finished installation;
- 6) Installation on Win XP, Vista is similar to the above.

Core Audio Stream Introduction

Core Audio Stream has formats of ASIO, KS and WASAPI, all of which can be supported perfectly by CMA Twelve, SHB2, CMA400i and CMA600i. Besides, CMA Twelve, SHB2, CMA400i and CMA600i support DSD format.

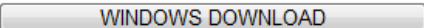
According to general audio processing procedures of PC, all the sound from applications and systems is processed by SRC, going through the lengthy system processing and hardware layer transmission, and then output to the external device. The output data are totally different after all those procedures. To output the pure, original and “bit-perfect” data, we must open a high-speed and dedicated channel for audio device, which is the core audio stream technology.

CMA Twelve, SHB2, CMA400i and CMA600i supports ASIO and KS on Win XP systems, and supports ASIO and WASAPI on Vista, Win7, Win8, Win10 systems. For example, when you enable WASAPI + Exclusive Mode between CMA Twelve, SHB2, CMA400i and CMA600i and player software (like JRiver), you can't control the volume through system controller, the sound from the system or any other application will not be heard at the CMA Twelve, SHB2, CMA400i and CMA600i output, which is because the system has opened the Core Audio Stream channel for CMA Twelve, SHB2, CMA400i and CMA600i and the audio data directly get to the DAC of CMA Twelve, SHB2, CMA400i and CMA600i with high-speed.

Setup Core Audio Stream on JRiver Media Center

We recommend using Jriver Media Center 20 for getting the best performance. JRiver Media Center is a fully functional media management and playback software. It can manage your music in groups and can stream music from the Internet. It also can be used for MP3 or DVD burning. JRiver can support kinds of audio files including MP3, MusicEx, WAV, OGG, RealAudio, RealVideo, AVI, Quick-Time etc. Let's take JRiver Media Center player 20 on Win7 32bit OS for an example to explain how to setup WASAPI.

I Download and Install

- 1) Go to JRiver website (<http://www.jriver.com/download.html>), and click  to download JRiver Media Center 20.0.131;
- 2) Install JRiver Media Center 20.

II Import Songs

- 1) Open “JRiver Media Center”, click “Tools”-“Import” and select “Configure Auto Import”, and then click “Next”;



2) Click “Add”-“Browse”, select the folder that contains songs, and then click “OK”-“Finish”.

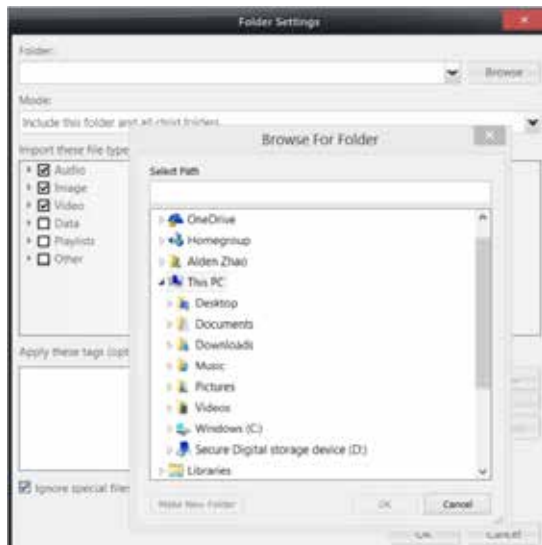


III JRiver Output Setup

1) Click “Tools” and select “Options”;



2) Select “Audio Device” under “Options”, and click “Questyle ASIO Driver[ASIO]” and select “Default Audio Device”, and then click “OK”.

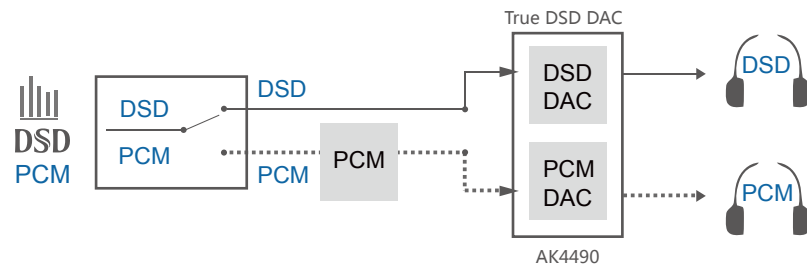


True DSD (Direct Stream Digital) Technology

(China Intellectual Property Office Patent No. 201520211945.X)

Nothing is better than the true. The True DSD technology is one of the core patented technologies of Questyle Audio. It processes DSD signals without any PCM converting and provides True DSD, which is fundamentally different from DoP and Native DSD.

When the system processes DSD signals, hardware mode switches to the True DSD channel. In this case, options for digital filter and digital volume control fail, strictly following the process of SACD playback.

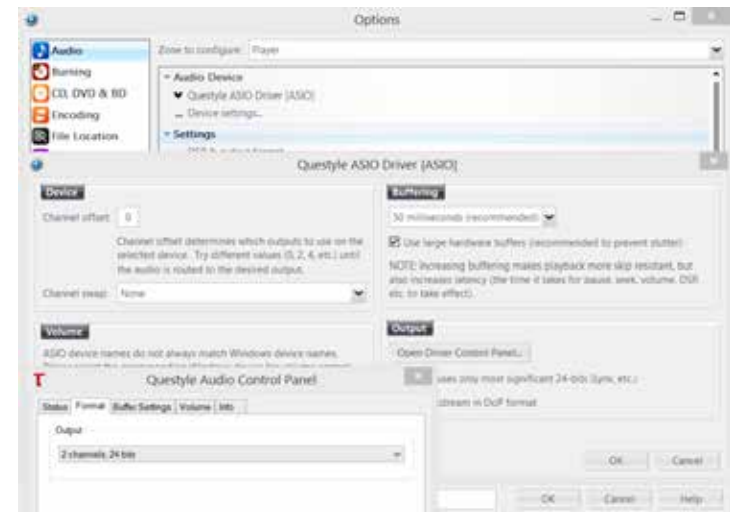


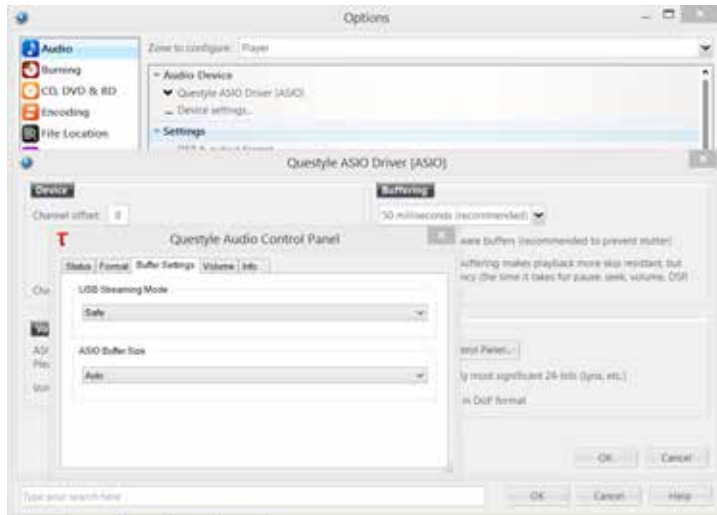
Setup DSD on JRiver Media Center

- 1) Connect your CMA Twelve, SHB2, CMA400i and CMA600i to its power supply and switch it on;
- 2) Connect your CMA Twelve, SHB2, CMA400i and CMA600i to PC with a USB cable;
- 3) Open JRiver Media Center, click "Tools" and then select "Options";
- 4) Select "Questyle ASIO Driver[ASIO]" under "Audio Device";

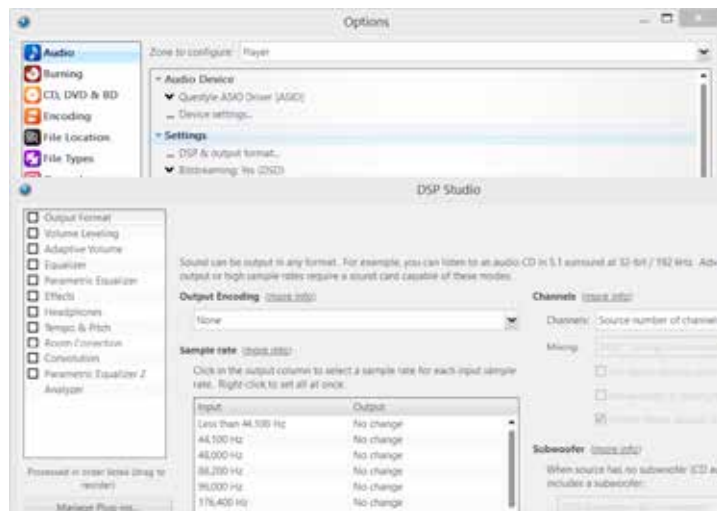


- 5) Select "Device Settings" under "Audio Device" and click "Open Driver Control Panel" under the ASIO, then select "Format"->"2Channels,24Bits"; select "Buffer Settings"->"Safe","Auto"; then close and click "OK" .

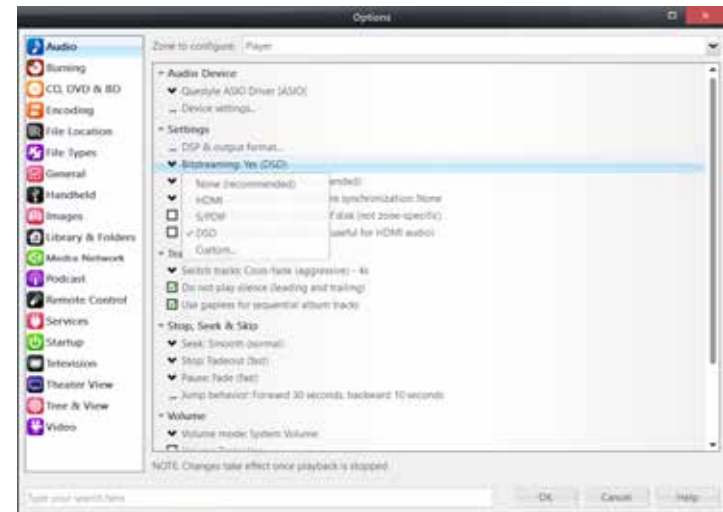




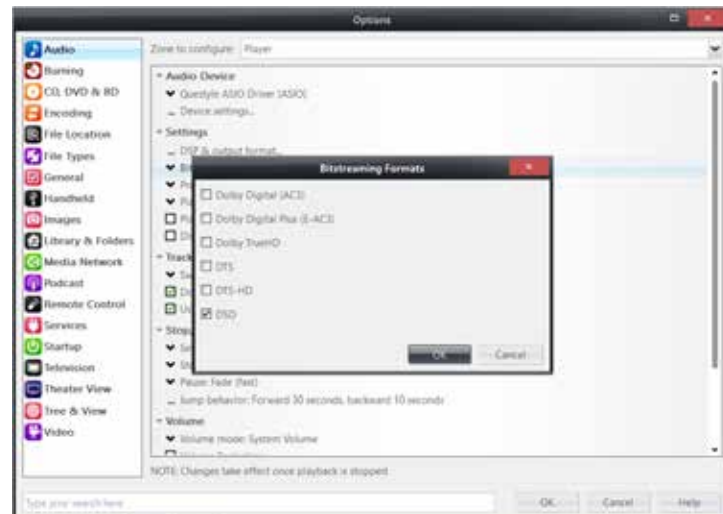
6) Click “DSP & output format” under “Settings”. Make sure nothing on the left row is ticked. (To wit: without any processing to DSD data, ensuring original sound.)



7) Select “Custom” under “Bitstreaming: Yes(DSD)”

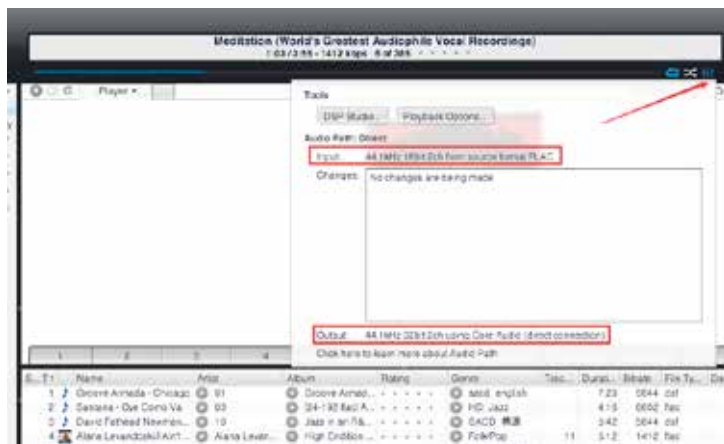


8) Tick “DSD” and then click “OK”.

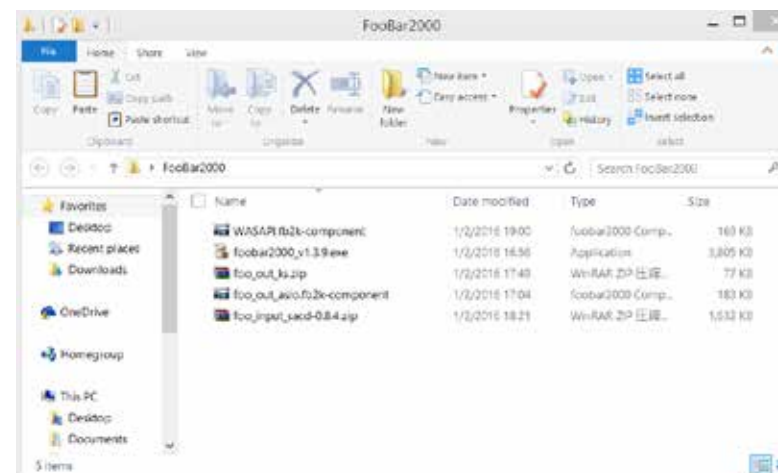


Save and exit. The setup is completed.

9) With a song playing, put the mouse pointer at where the arrow is pointing to view current input and output.



You will get 5 files after the above download (as shown below):



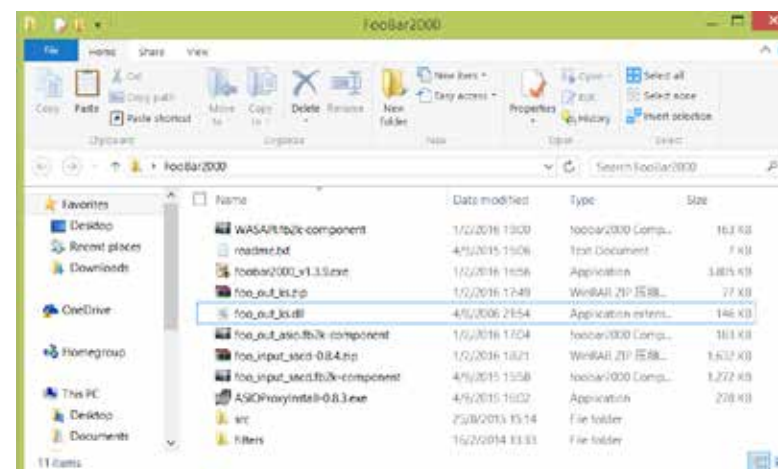
Install Foobar2000

Foobar2000 is a free and multifunctional audio player as well as a powerful tool for audio processing.


I Download the Following Software and Plugins

1. Take Foobar2000 V1.3.9 for an example
<http://www.foobar2000.org/download>
2. ASIO channel plugin
http://www.foobar2000.org/components/view/foo_out_asio
3. WASAPI channel plugin (no need for higher versions than WIN7)
http://www.foobar2000.org/components/view/foo_out_wasapi
4. Core Audio Stream channel plugin (no need for WINDOWS XP)
http://www.foobar2000.org/components/view/foo_out_ks
5. ASIO driver (take ASIOProxyInstall-0.8.4 for an example)
http://sourceforge.net/projects/sacddecoder/files/foo_input_sacd/

After the unzipping, you will see the following:



II Install Foobar2000 V1.3.9

1. Double click  **foobar2000_v1.3.9.exe** to install Foobar2000, and then click “Next”.

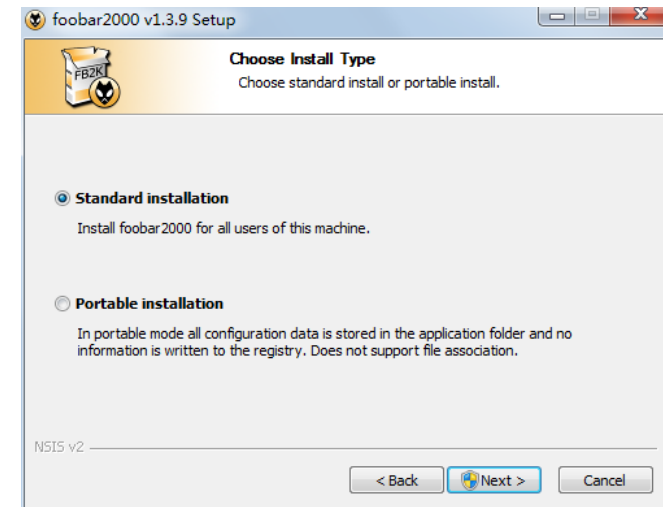


2. Click “I Agree”.

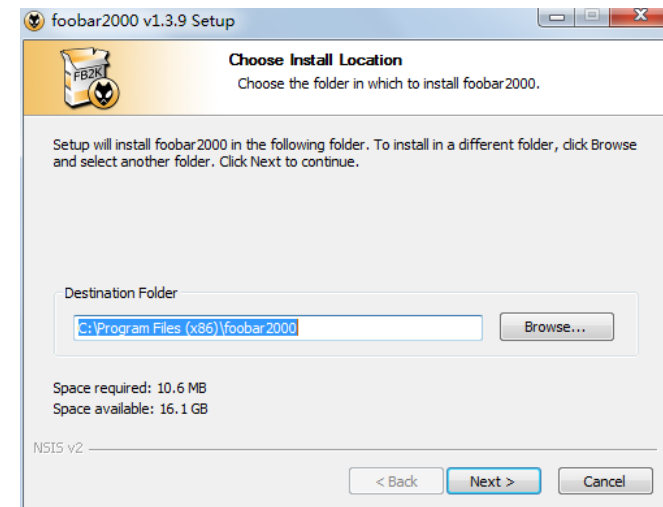


3. Select “Standard installation”.

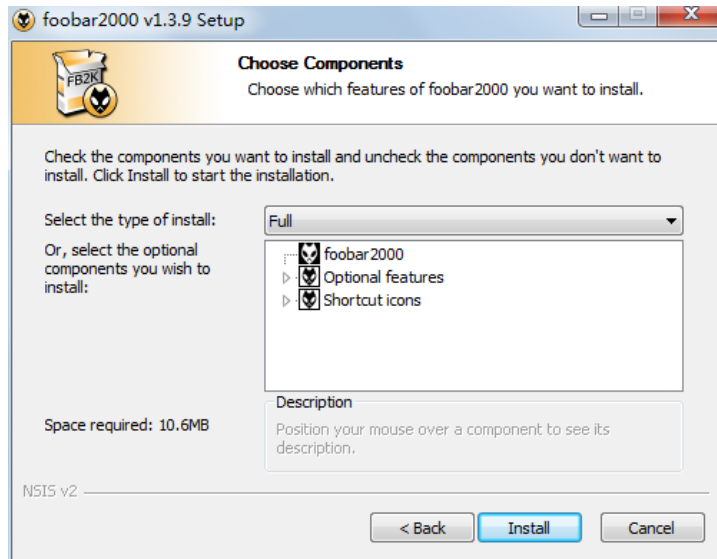
4. Click “Next” to choose Foobar2000 install location. (Default install location is C drive)



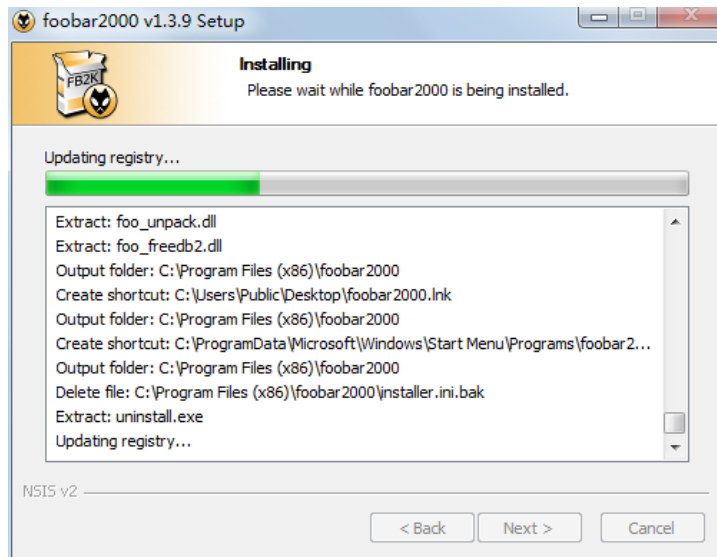
5. Click “Next”.



6. Click "Install". (Default installation of all the components)

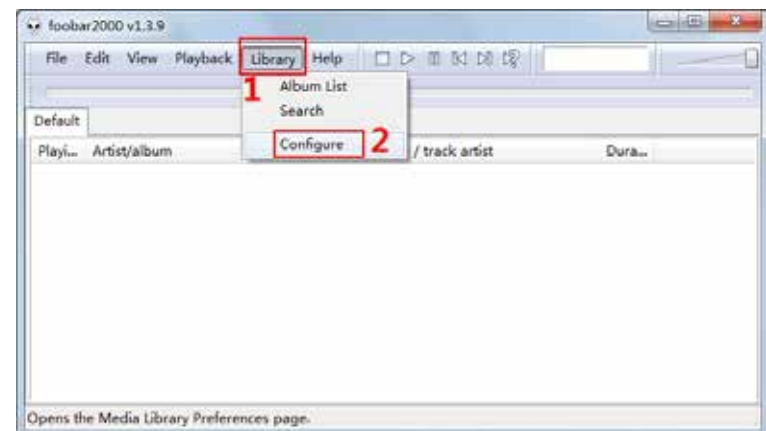


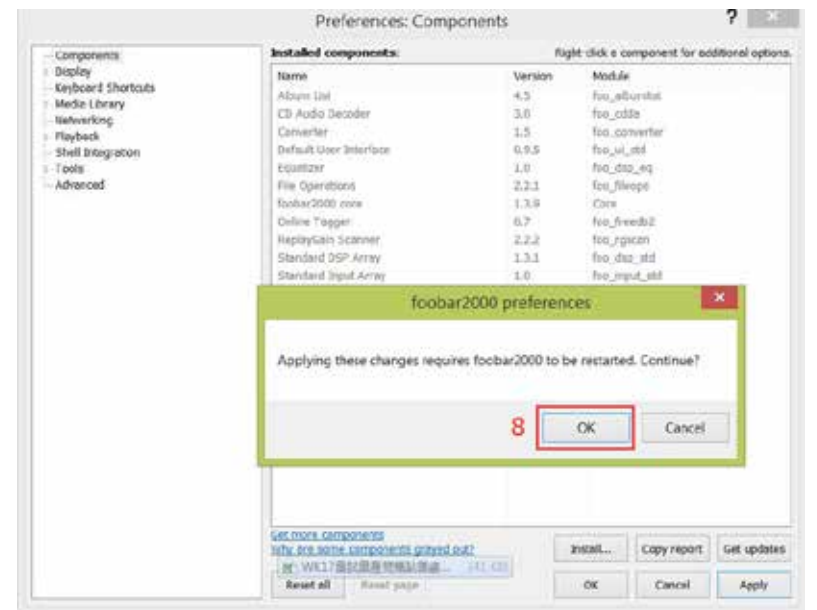
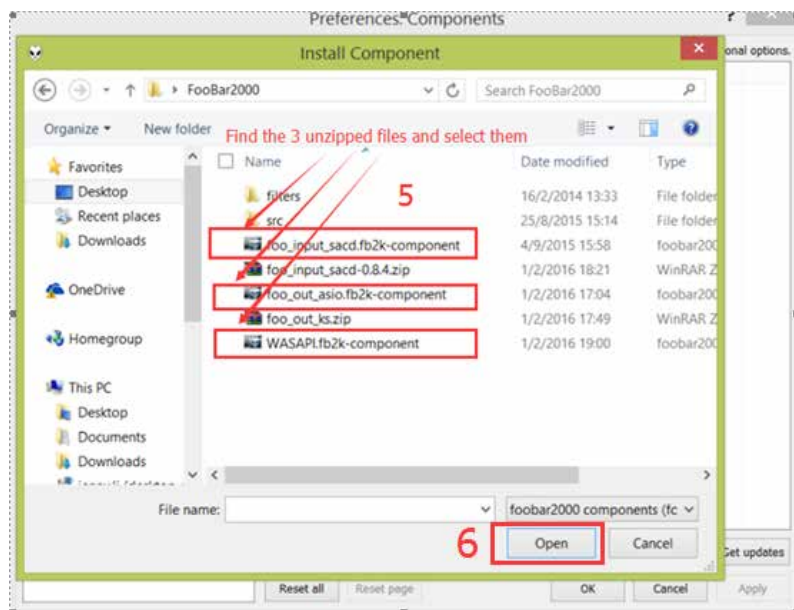
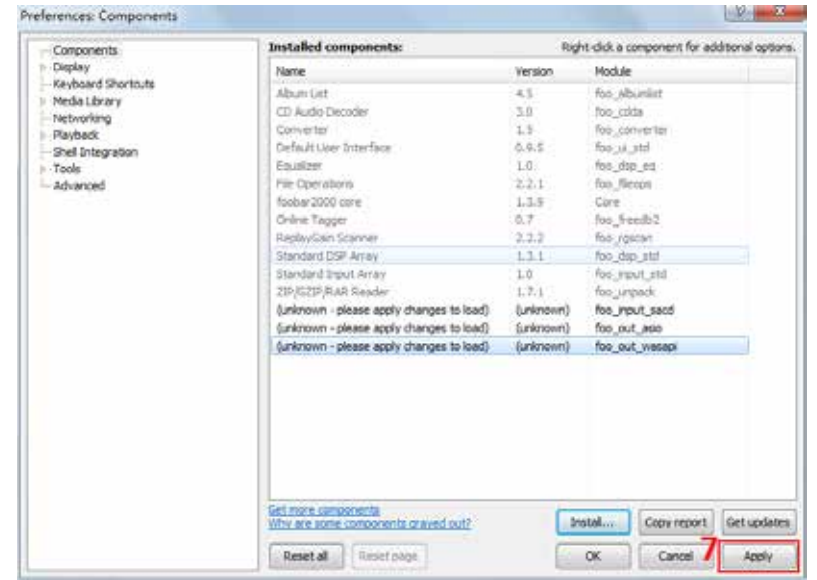
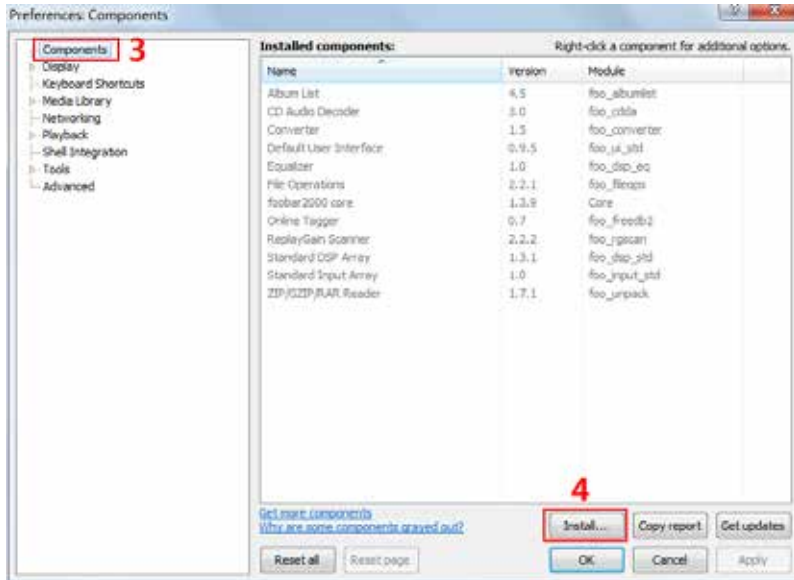
7. Click "Finish" and run Foobar2000.



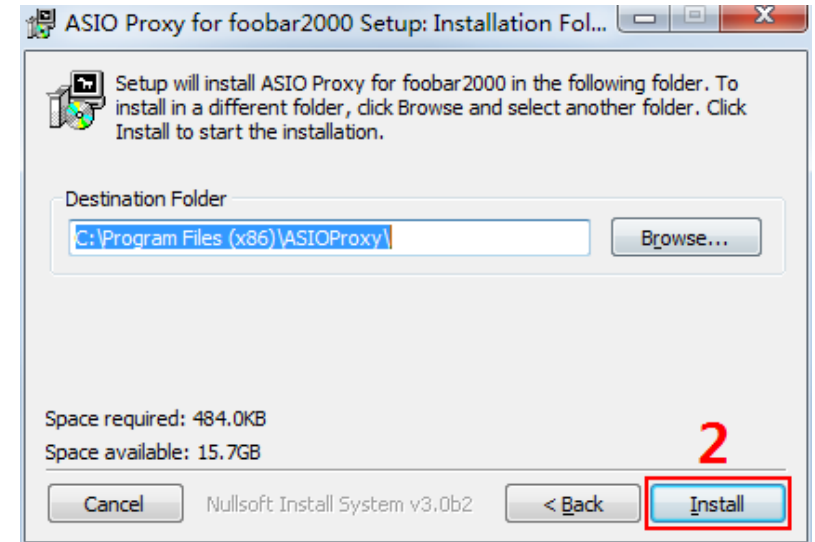
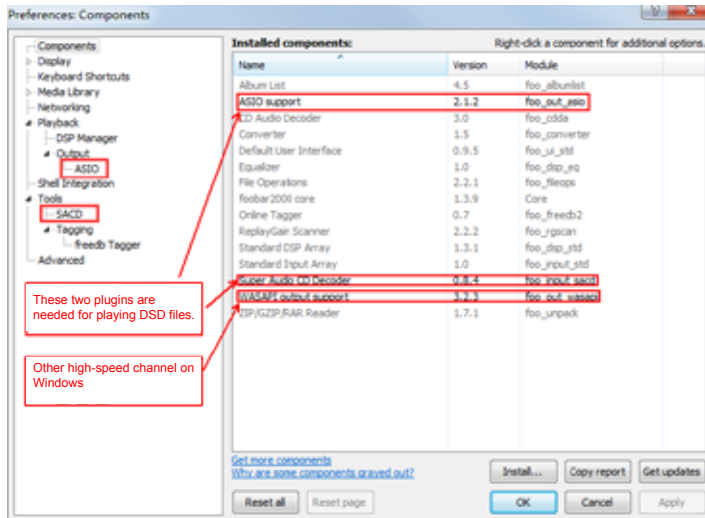
III Install Plugins

1. Install plugins according to the following steps highlighted from 1 to 8.



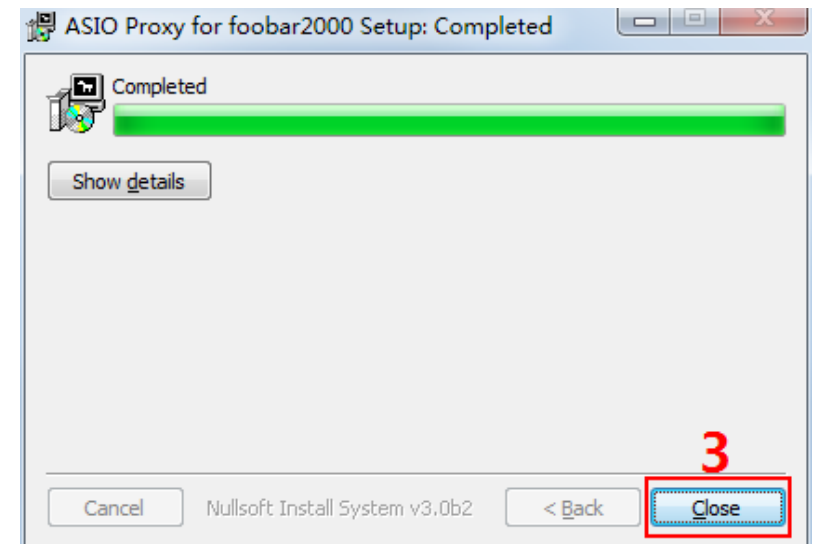
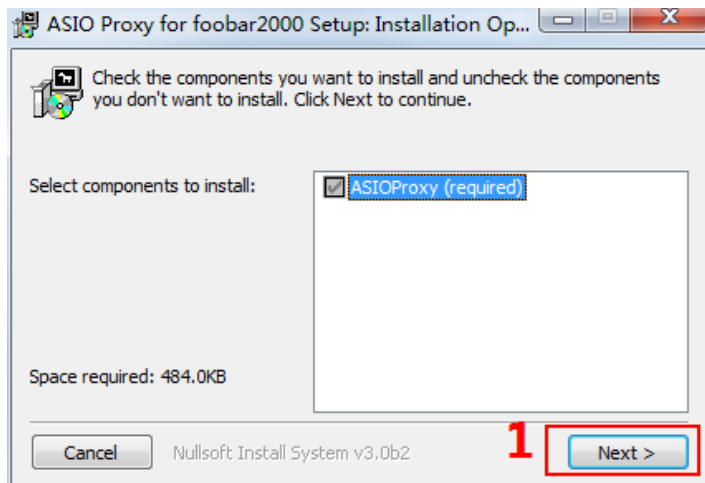


2. Restart Foobar2000 and go to the install location to confirm that the three plugins highlighted in the following figure are installed successfully. If so, you will see two more options on the left of the interface. (as shown in the figure below)



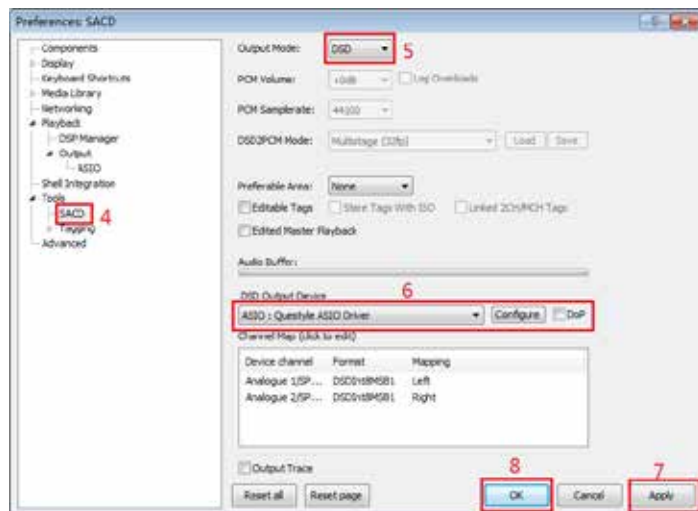
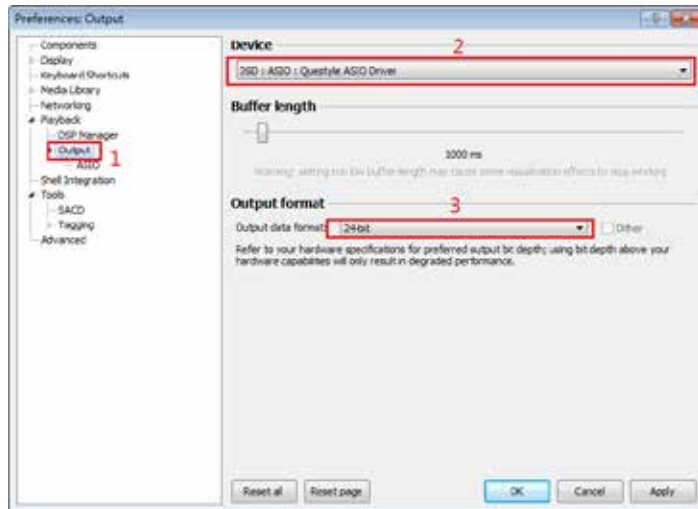
If you come to this step, you have completed all the preparations.

3. Install ASIO driver: double click ASIOProxyInstall-0.8.3.exe in the unzipped folder and then install the three components one by one.



IV Setup the Software

1. Connect your device to a PC with a USB cable and finish the software setup according to the following steps highlighted from 1 to 9. Close and restart the software, then Foobar2000 is ready for playing PCM and DSD files.



2. In addition, installing plugins for Core Audio Stream channel requires copying the “foo_out_ks.dll” (highlighted in the figure below) to “components” under installation directory. Then restart the software and it is ready for playing files.



If the DSD files fail to play, please try the following:

1. Exit the antivirus software and reinstall the device driver. Maybe your device program is mistakenly deleted by the antivirus software.
2. Every time you finish setting Foobar2000, please restart the Foobar2000 software.

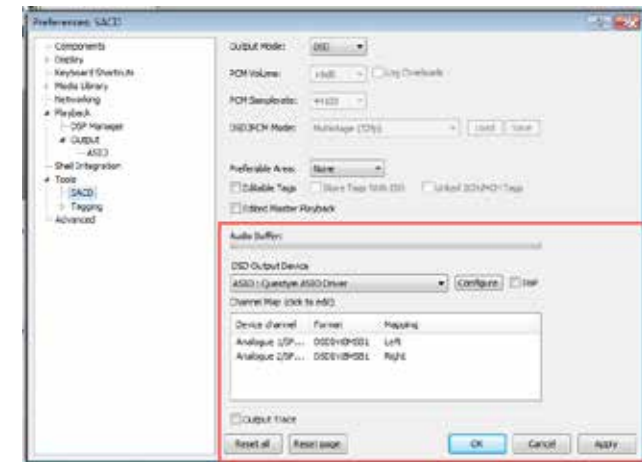


Fig. 1

3. Foobar plugins have different versions and their compatibility is different with different PC operation system. When the DSD files fail to play, please download another version of the plugin on Foobar website, then repeat the above installation steps. The installation succeeds until you see the window options in Fig.1.

Cautions

1. Do not use your device in a hot or humid environment.
2. Unplug your device in lightning weather or during a long period without using.
3. Do not have your device covered by anything.
4. Only the specified or manufacturer-supplied power cord can be used for device.
5. Clean your device with a piece of dry cloth or the special detergent.
6. If your device fails to work, please contact your dealer or manufacturer.

Setup on Mac OSX

For Mac OSX, no special drivers are needed for later versions than OS 10.5.7. The performance of CMA Twelve, SHB2, CMA400i and CMA600i remains the same on Mac OS with the standard asynchronous transmission via USB.

Make sure your device is selected as the default output device in the system preferences. When you see the following interface after going to “System Preferences”-“Sound”(as shown below), your device is ready to work.



The information in this manual is subject to change without notice. All right reserved. ©2018 Questyle Audio Technology Co.,Ltd.